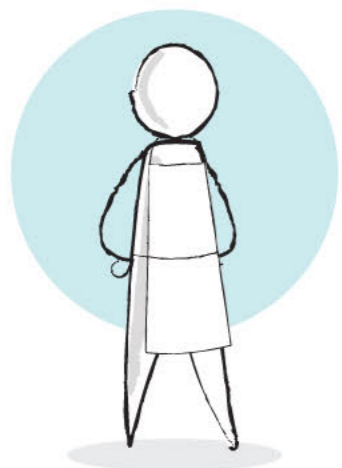


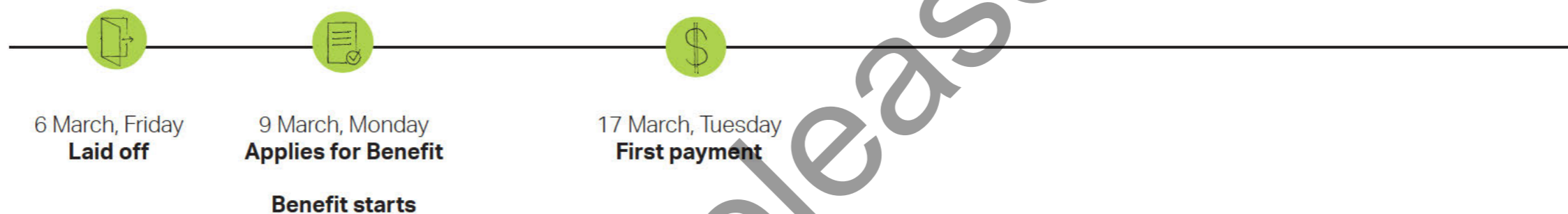
## Directly Affected by COVID-19



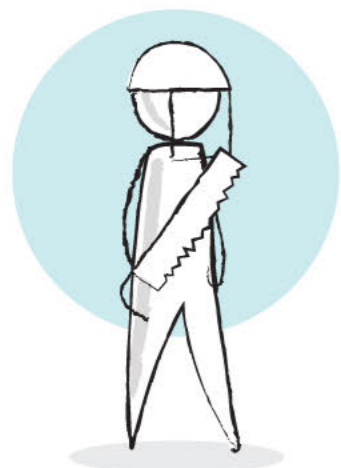
Due to a downturn in demand from the effects of COVID-19, a number of employees have been laid off at the local meat processing plant.

- + Meatworker
- + Jobseeker
- + Single

### No Stand-down



## Not Affected by COVID-19



A sawmill in Matura has closed as another has opened, so this plant is now surplus to requirements. Staff have been made redundant.

- + Sawmill worker
- + Jobseeker
- + Single

### Stand-down applies



## Indirectly Affected by COVID-19



A childcare centre has been experiencing a decline in enrolments over the last year because of increased competition. Some families have withdrawn their children from the centre because they are no longer employed due to COVID-19. The owner decides to close the business because it is no longer financially viable. One of the employees who was made redundant applies for benefit.

- + Childcare worker
- + Jobseeker
- + Single

### Potential Stand down

The case manager decides the business was already struggling and did not close because of coronavirus, therefore the client is not affected.

Eastcoast Case Manager



9 March, Monday  
**Applies for Benefit**

**Benefit starts**

stand down



16 March, Monday  
**Benefit starts**



24 March, Tuesday  
**First payment**

The case manager decides the trigger for closing the business was coronavirus, therefore the client is affected.

Southern Case Manager



9 March, Monday  
**Applies for Benefit**  
**Benefit starts**



17 March, Tuesday  
**First payment**

Proactively Released

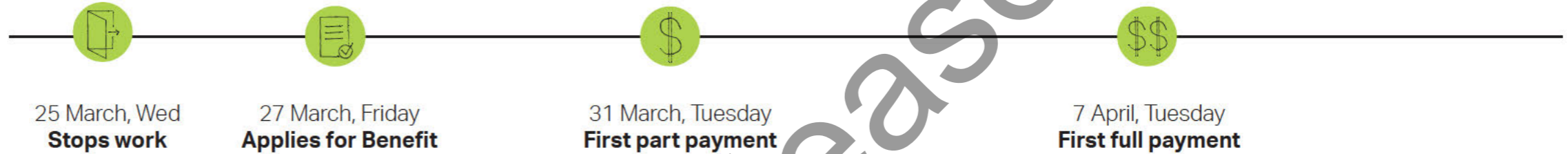
## Directly Affected by COVID-19



The tour operator of 'Whale Watch Travel Services' has had a significant down turn in the amount of clients they receive and has had to shut down the business. One of the affected employers applies for benefit.

- + Tour operator
- + Jobseeker
- + Couple with children

### No Stand-down



Scenario 2

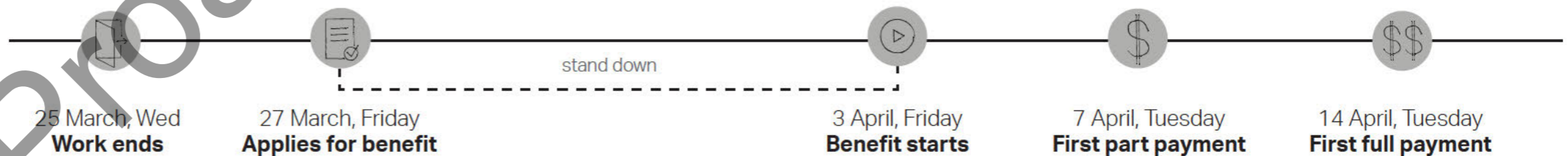
## Not Affected by COVID-19



A petrol station employee is made redundant due to a down-turn over the last year. They no longer need 2 full-time employees.

- + Service Station Attendant
- + Jobseeker
- + Couple with children

### Stand-down applies





## Indirectly Affected by COVID-19



A few months ago a café expanded and opened a new site. There wasn't quite enough demand to cover the expansion and the expected loss of business from COVID-19 meant the owners decided to close the new site. One of the employees who was made redundant applies for benefit.

- + Café worker
- + Jobseeker
- + Couple with children

### Potential Stand down

