

Total working age main benefit population

350,700

78%

↑ 3%*
at least one dose

74%

↑ 6%*
Fully vaccinated (two doses)

Fully vaccinated (two doses)

4%

↓ -3%*
first dose only

* All percentage increases are between 4 Jan and 15 Feb 2021. Percentage increases shown in graph 1, 2, 3 and 4 are for 'at least one dose'.

**Graph #1 – Ordered from largest to smallest benefit type.

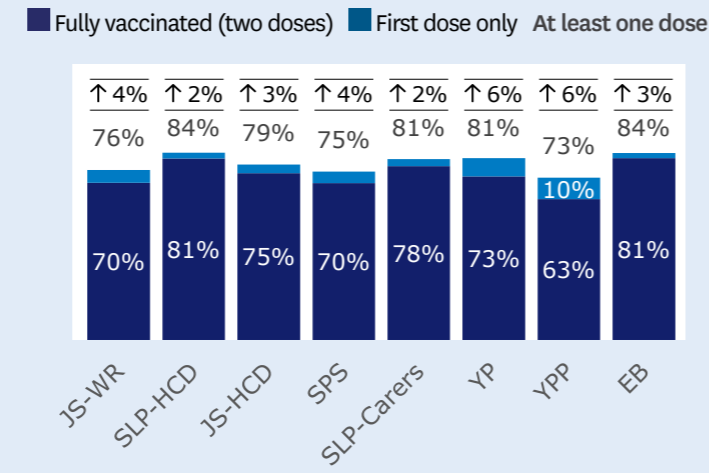
Benefit breakdown

JS-WR = Jobseeker Support – Work Ready
JS-HCD = Jobseeker Support – Health Conditions and Disability
SLP-HCD = Supported Living Payment – Health Conditions and Disability
SLP-Carers = Supported Living Payment – Carers
YP = Youth Payment
YPP = Young Parent Payment
EB = Emergency Benefit
SPS = Sole Parent Support

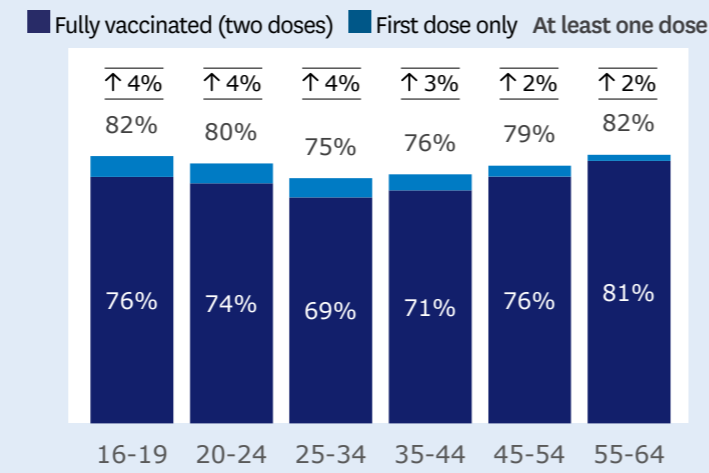
Disclaimer: These results are not official statistics. They have been created for research purposes from the Integrated Data Infrastructure (IDI) which is carefully managed by Stats NZ. For more information about the IDI please visit www.stats.govt.nz/integrated-data.

Working age main benefit clients

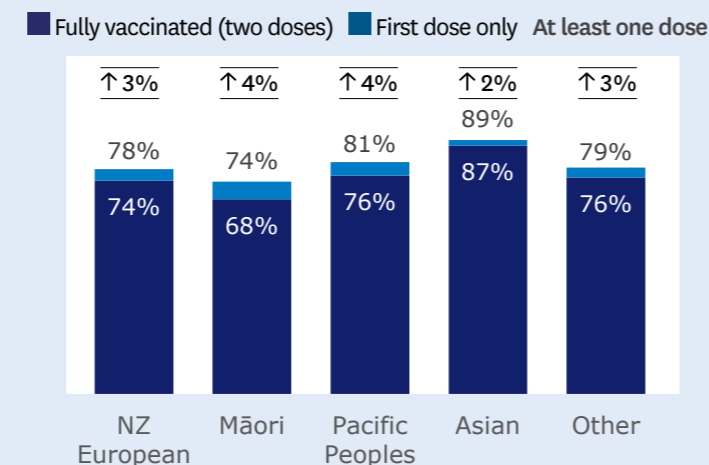
1 Benefit breakdown**



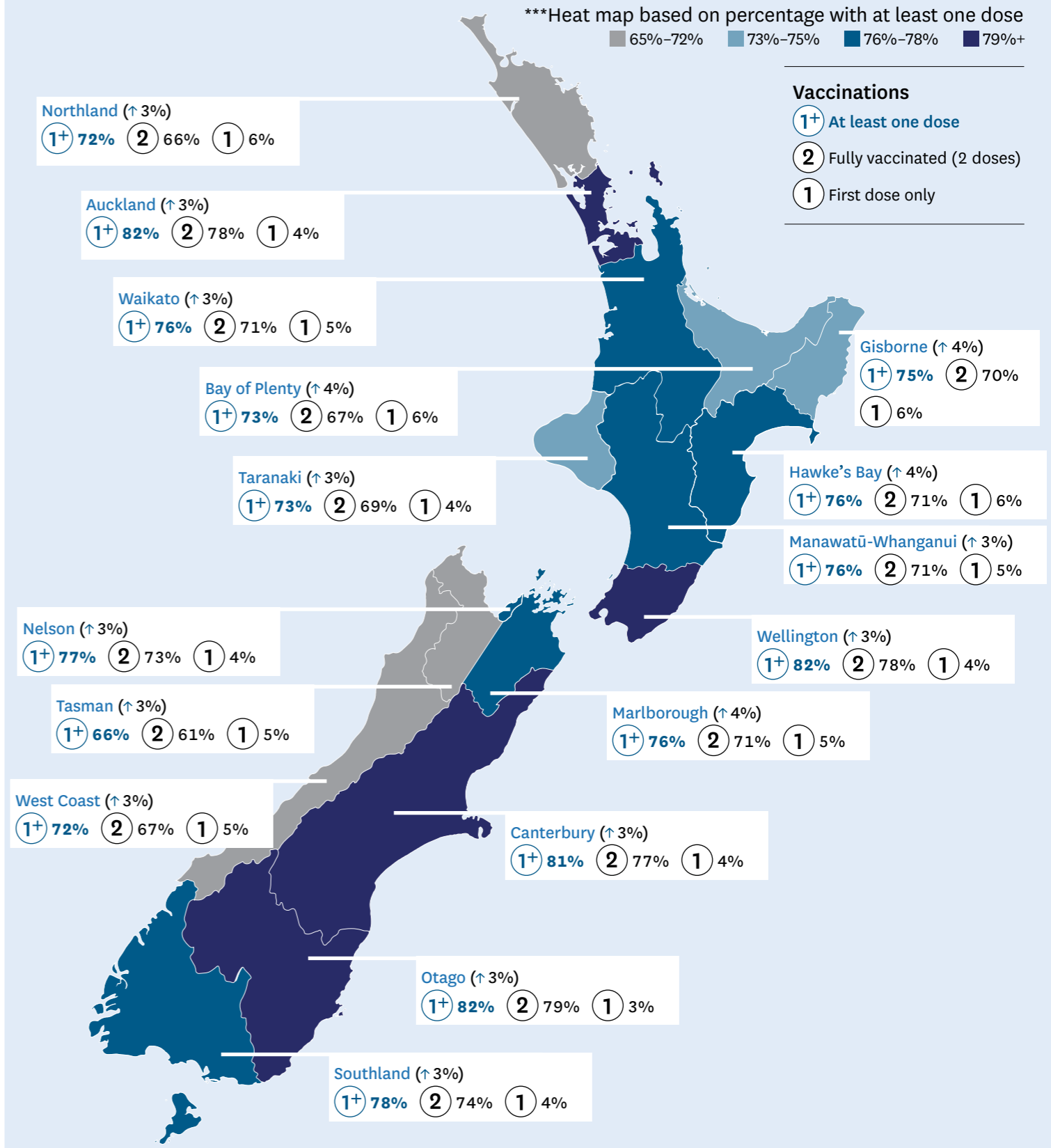
2 Age



3 Ethnicity (total response)



4 Total vaccination uptake by MSD region***

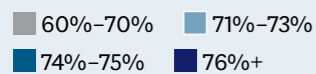


Working age Māori and Pacific Peoples main benefit clients

Supp. benefits and hardship assistance clients

5 Total vaccination uptake by Māori and Pacific Peoples****

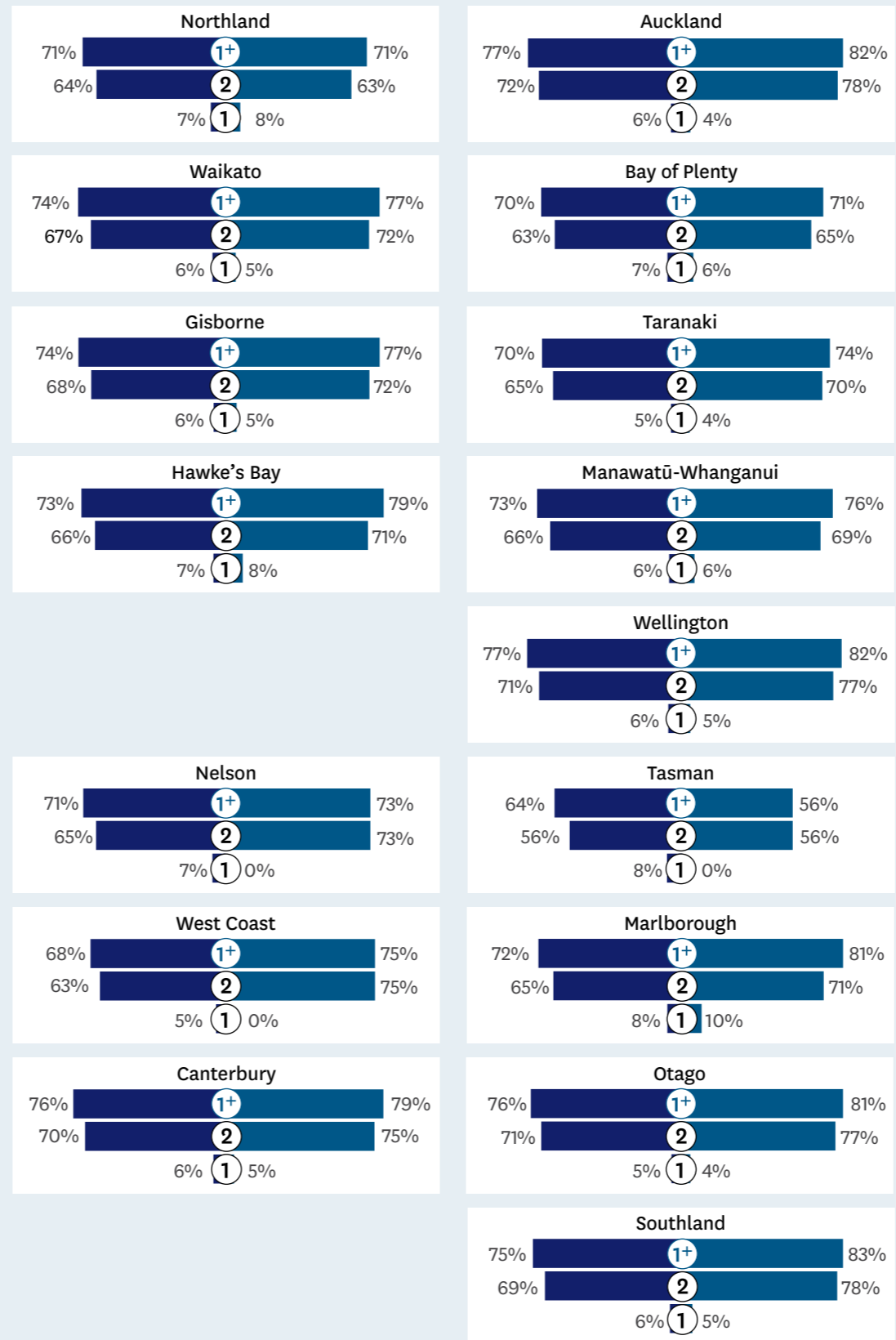
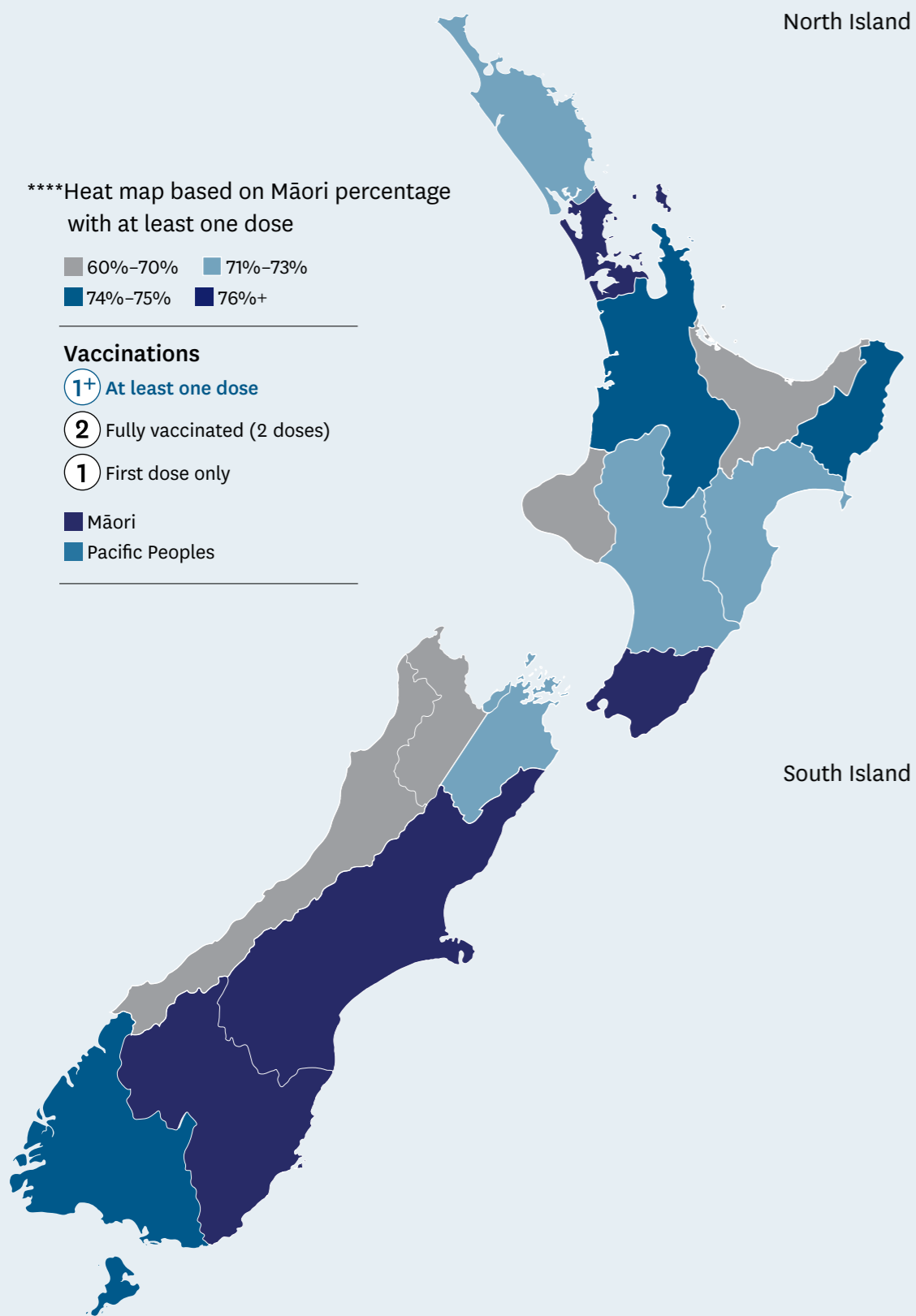
****Heat map based on Māori percentage with at least one dose



Vaccinations

- 1+ At least one dose
- 2 Fully vaccinated (2 doses)
- 1 First dose only

- Māori
- Pacific Peoples



Accommodation Supplement

82% ↑ 3%
at least one dose

78% ↑ 5%
Fully vaccinated (two doses)

3% ↓ -2%
First dose only

Emergency Housing Special Needs Grant

73% ↑ 5%
at least one dose

65% ↑ 10%
Fully vaccinated (two doses)

8% ↓ -5%
First dose only

Food Special Needs Grant

76% ↑ 4%
at least one dose

69% ↑ 8%
Fully vaccinated (two doses)

6% ↓ -4%
First dose only

Temporary additional support

79% ↑ 3%
at least one dose

75% ↑ 5%
Fully vaccinated (two doses)

4% ↓ -2%
First dose only

Benefit Advances

76% ↑ 4%
at least one dose

70% ↑ 8%
Fully vaccinated (two doses)

6% ↓ -4%
First dose only