

# Mahere Mahi o te Whakawhiwhi Kirimana Rāngai Pāpori 2022–2028

Ko te tikanga o te Mahere Mahi Whakawhiwhi Kirimana Rāngai Pāpori ko te whakaumu i te āhuatanga o te whakawhiwhi i ngā kirimana tautoko me ngā ratonga pāpori, kia pai ake ai te tautoko i te tangata me ngā whānau kia whai uara ai ō rātou ao.

Kua rongō te kāwanatanga me mātāmua te noho o ngā hononga pono o te whakawhiwhi kirimana rāngai pāpori – kua ko ngā kirimana me ngā ture whakawhiwhi – otirā kua aro ake mātou.

E mahi tana ana te kāwanatanga me ngā rōpū tūmatanui me ngā hapori ki te whakaumu i te āhua o te whakawhiwhi i ngā tautoko me ngā ratonga, mā te hapaapai i te huarahi ā-hononga ki te whakawhiwhi kirimana. He huarahi e hoahoatia ai ngā ratonga me nga tautoko ka whiwhi rātou, e ngā awhero, ngā wheako, ngā oranga tūturu, me ngā whāinga.

Hei whakarite i te whakaumutanga puta i te rāngai pāpori katoa, kua hangaia e mātou he Mahere Mahi ā-ono tau. Te Mahere Mahi:

- ka tūraki mātou i ngā tauārai o te wā e whakauaua ana i te huarahi ā-hononga ki te whakawhiwhi kirimana
- ka whakakake mātou i runga ake o ngā kaupapa me ngā angitu o te wā, me te tautoko i ngā whakahoutanga pāpori nui kua tīmata kē
- ka ako haere tonu, me te aroturuki tonu me te whakamahi i te tiri mōhiohio e mātua whakarite ai te panonitanga.



## E arahina ana ā mātou mahi e ngā mātāpono e whitu

E tautokona ana tēnei huarahi ā-hononga e ngā mātāpono e whitu. I hangaia ēnei mātāpono i muri mai i ngā whakawhiwhi kōrero torowhānui hei ārahi i te hononga whakauru, mahi ngātahi hoki ki te hunga katoa e whai wāhi ana. Ka uru ki tēnei ngā tāngata me ngā whānau e tautokona ana, ngā tāngata whenua pēnei i ngā iwi me ngā hapū, ngā whakahaere kāwanatanga kore, te rāngai tukuoha me ngā tari kāwanatanga.



**Te mana kōwhiri mā te tangata, ngā whānau me ngā hapori**



**Ko ngā rangapūtanga Māori-Karauna kei te pūtake o ngā whakawhiwhinga kirimana whaihua**



**Ka mahi ngātahi te rāngai, ā-takiwā, ā-rohe, ā-motu hoki**



**He toitū tonu tēnei rāngai**



**He pūataata ngā whakatau me ngā mahi**



**E urupare ana te whakawhiwhi kirimana ki te tautika o ngā taupori ahurei, kanorau hoki**



**Kei te ako tonu te rāngai otirā kei te whakapai haere tonu**

# Mahere Mahi o te Whakawhiwhi Kirimana Rāngai Pāpori 2022–2028

Kua hangaia e mātou ētahi tūmahi e iwa e whakatakoto huarahi ana ki te whakatinana i tētahi huarahi ā-hononga ki te whakawhiwhi kirimana.

*“E ako ana te kāwanatanga mai i a mātou me pēhea te mahi ā-hononga nei.”*



## 1 Ako me pēhea te whakatinana i tētahi huarahi ā-hononga ki te whakawhiwhi kirimana

Ka tūhono atu te rōpū hōtaka mahi a te Whakawhiwhi Kirimana Rāngai Pāpori, arā te Commissioning Hub, ki te hunga e mahi kē ana i runga i te huarahi ā-hononga, kia mārama ki ō rātou take o te hiahia ki te mahi ngātahi, ā rātou mahi ake me ngā mahi a ō rātou hoa rangapū, otirā me ngā akoako hoki hei tohanga.

*“Kia tūtaki atu mātou ki te kāwanatanga me ngā rōpū tūmatanui, ka whai pūkenga rātou ki te mahi ngātahi me mātou.”*



## 2 Te whakarato ārahitanga ki te rāngai pāpori me pēhea te mahi ā-hononga

I runga anō i ngā mea kua rongo, kua ako hoki mātou, ka hanga te Commissioning Hub me Hikina Whakatutuki i ngā taputapu whakapiki āheinga, me te ārahitanga me te whakangungu hei tautoko i te hāpaitanga a te rāngai i te huarahi ā-hononga ki te whakawhiwhi kirimana.

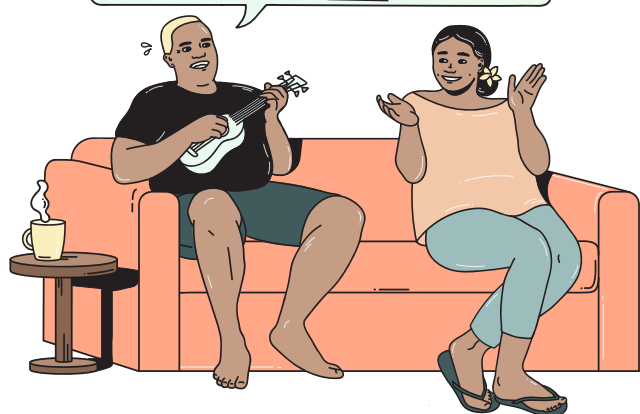


*“Ka nui ake te wā ki te tuku tautoko, kua i te tuhi pūrongo roa, e kī taurangi ana kei te tika te whakarato i te momo tautoko tika.”*

## 3 Te huri i ngā ture me ngā tukanga o te pūnaha whakawhiwhi kirimana kia āhei ai te rāngai ki te mahi ngātahi ki te tuku ratonga pāpori

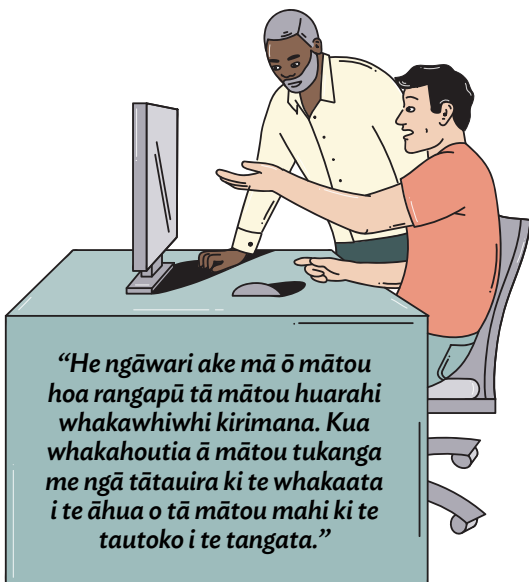
Ka mahi ngātahi ngā tari kāwanatanga, ngā NGO me ngā hapori ki te tūraki i ngā tauārai ā-pūnaha ka aukati i a tātou mai i te whakatinana i tētahi huarahi ā-hononga ki te whakawhiwhi kirimana, hei taurira, ngā āwangawanga mauroa o te taumahatanga o te tautoku me te rapu pūtea.

*“Kāore ngā tari maha a te kāwanatanga i te tono i a mātou kia uru ki roto i ngā mahi ōrite.”*



## 4 He tautoko i ngā hōtaka whakahou kia atamai ake te mahi, kia tūhono ake hoki, ki te whakatinana i ngā huarahi ā-hononga ki te whakawhiwhi kirimana

Ka whai āheinga ki te mahi ngātahi ngā hōtaka whakahou pāpori whiti-kāwanatanga matua e hiahia ana i tētahi huringa ki te whakawhiwhi kirimana e tutuki ai tana kaupapa. Kei roto i ēnei whakahoutanga te whakaumu hauātanga, hauora hoki, Te Aorerekura: Rautaki ā-Motu ki te Whakakore i te Whakarekerekere ā-Whānau me te Koere, te Rautaki Oranga Rangatahi, me te Rautaki Oranga Pasifika o te Kāwanatanga Katoa.

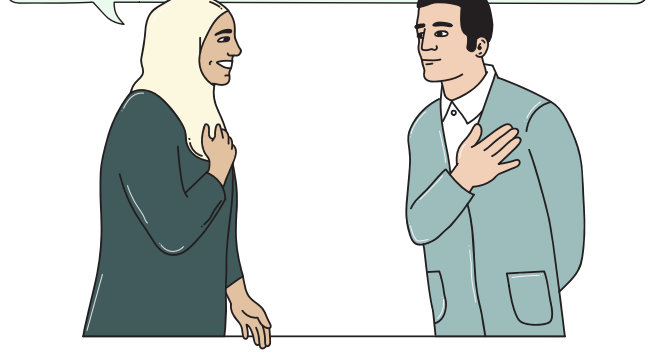


*“He ngāwari ake mā ō mātou hoa rangapū tā mātou huarahi whakawhiwhi kirimana. Kua whakahoutia ā mātou tukanga me ngā tātauira ki te whakaata i te āhua o tā mātou mahi ki te tautoko i te tangata.”*

## 5 Ka whakaū huringa ā-whakahaere ngā tari kāwanatanga me ngā hinonga Karauna ki te tuku i ngā ‘pūmautanga’ kua tautokona e te kāwanatanga ki te tikanga whakawhiwhi kirimana

Ka whakaū huringa ngā tari kāwanatanga rāngai pāpori me ngā hinonga Karauna ki te hiki i ā rātou tikanga whakawhiwhi kirimana, kia tīmata hoki ki te whakatinana i tētahi huarahi ā-hononga ki te whakawhiwhi kirimana.

*“Ka taea e mātou te whakarite mō te anamata i runga anō i te manawanui nā te mea e mārama ana mātou ki te āhua o te whakatinana a ngā tari kāwanatanga i ngā huarahi ā-hononga ki te whakawhiwhi kirimana.”*



## 6 Ka whakatakoto ngā tari kāwanatanga me ngā hinonga Karauna i ngā mahi me te huarahi ka whāia ki te whakatinana i tētahi huarahi ā-hononga ki te whakawhiwhi kirimana

Ka mahi ngātahi ngā tumu whakarae o te rāngai pāpori, mā roto i te Poari Oranga Pāpori, i runga i ngā mahere me pēhea te neke o ngā tari kāwanatanga ki te huarahi ā-hononga, kia noho tērā hei tikanga ahuwhānui mō te whakawhiwhi kirimana ratonga pāpori.



*“E āwhina ana ā mātou wheako me ngā wawata ki te ārahi i ngā huringa e tika ana kia hurihia...”*

*kia whiwhi ai mātou i te tautoko, kia pai ai te noho i te ao nei.”*

## 7 Hangaia he rōpū kaitiaki o ngā tāngata kei roto, e whai pānga ana ki ngā whakatau a te rāngai ratonga, kia pai ai te ārahi, te whakatairanga me te tiaki i te whakaumutanga o te pūnaha

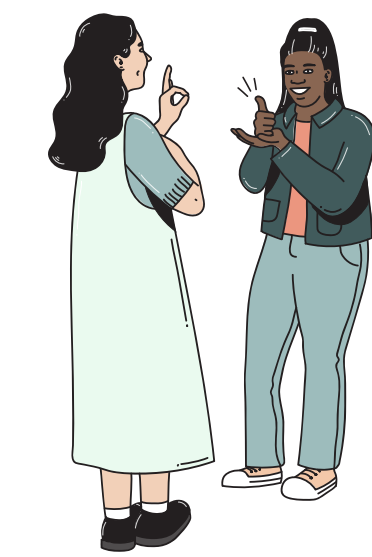
Ka mahi ngātahi tētahi rōpū kāwanatanga mō te whakawhiwhi kirimana rāngai pāpori hei kaitiaki, ki te whakarite kia kōkiritia te panoni whakaumu ki te whakawhiwhi kirimana rāngai pāpori e ngā reo o te takitahi, o ngā whānau, ngā hapori, ngā rōpū tūmatanui me ngā tari kāwanatanga.



*“Kua tīmata tā mātou kite i ngā whakapainga ki te āhua o te aro o te tangata ki a mātou me te tautoko i a mātou kia pai ai te noho.”*

## 8 Te hanga rōpū e noho haepapa ana ki te whakatinana i te Mahere Mahi Whakawhiwhi Kirimana Rāngai Pāpori 2022–2028

Ka whakarato tautoko, ārahitanga hoki te Commissioning Hub, ā, ka whakatinana i te panonitanga ki tētahi huarahi ā-hononga ki te whakawhiwhi kirimana.



*“He pānga tō te tautoko e whiwhi ana mātou, ki ō tātou oranga.”*

*E uaratia ana ō mātou wheako, otirā ka whakamahia ki te whakaatu i te pai o ngā ratonga pāpori, ki te whakapai rānei.”*

## 9 Te aroturuki me te ako he aha te pānga o te whakawhiwhi kirimana rāngai pāpori ki te tangata me ngā whānau

Ka whakatinana te Commissioning Hub i ngā waeine pūrongo, ngā whakaritenga aroturuki me ngā tukanga o te ako haere tonu me te tiri mōhiohio mō ngā pānga o ngā huringa ki te tangata, ngā whānau, ngā hapori me ngā rōpū tūmatanui.