

Quarterly Working-Age Benefit Numbers – December 2019

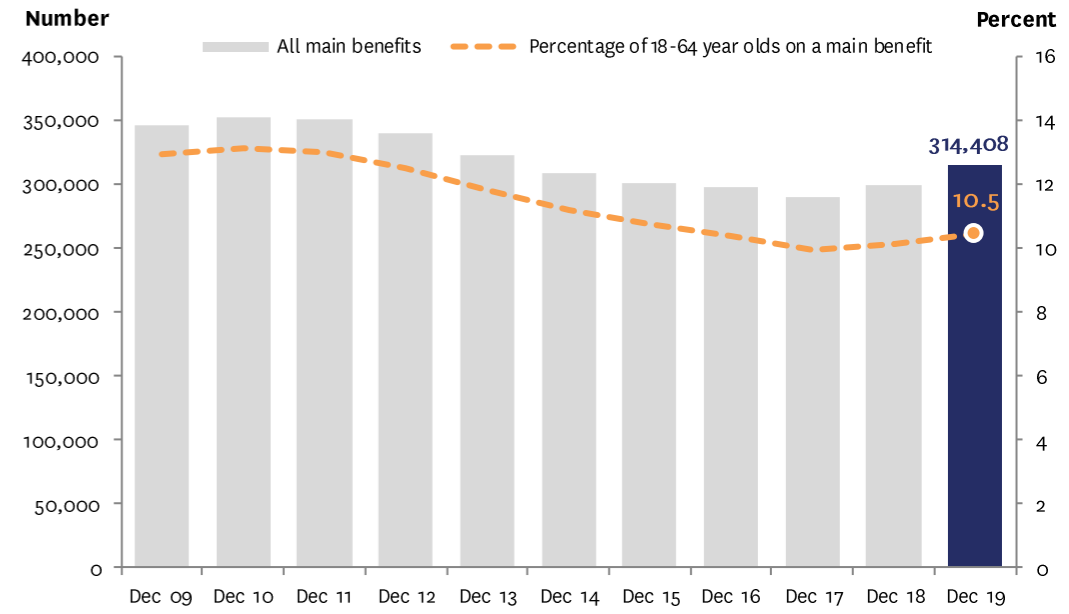
① Unless otherwise noted, quarterly numbers presented in this document are as at the end of the quarter and clients reported on are working age (i.e. 18–64 years).



Main benefit categories and sub-categories

	Quarterly two-year trend (Dec 17 to Dec 19)	Dec 18	Sep 19	Dec 19	Quarterly change		Yearly change	
					Number	Percent	Number	Percent
All main benefits		299,345	299,472	314,408	14,936	5.0 ▲	15,063	5.0 ▲
Jobseeker Support (JS)		134,048	142,931	147,464	4,533	3.2 ▲	13,416	10.0 ▲
Work Ready (JS - WR)		74,107	80,602	83,103	2,501	3.1 ▲	8,996	12.1 ▲
Health Condition and Disability (JS - HCD)		59,941	62,329	64,361	2,032	3.3 ▲	4,420	7.4 ▲
Sole Parent Support (SPS)		59,870	59,715	61,190	1,475	2.5 ▲	1,320	2.2 ▲
Supported Living Payment (SLP)		92,687	93,063	93,594	531	0.6 ▲	907	1.0 ▲
Health Condition and Disability (SLP - HCD)		84,059	84,405	84,752	347	0.4 ▲	693	0.8 ▲
Carers (SLP - Carers)		8,628	8,658	8,842	184	2.1 ▲	214	2.5 ▲
Youth Payment/Young Parent Payment		1,680	1,616	1,611	-5	-0.3 ▼	-69	-4.1 ▼
Youth Payment (YP)		271	270	259	-11	-4.1 ▼	-12	-4.4 ▼
Young Parent Payment (YPP)		1,409	1,346	1,352	6	0.4 ▲	-57	-4.0 ▼
Other main benefits		11,060	2,147	10,549	8,402	391.3 ▲	-511	-4.6 ▼

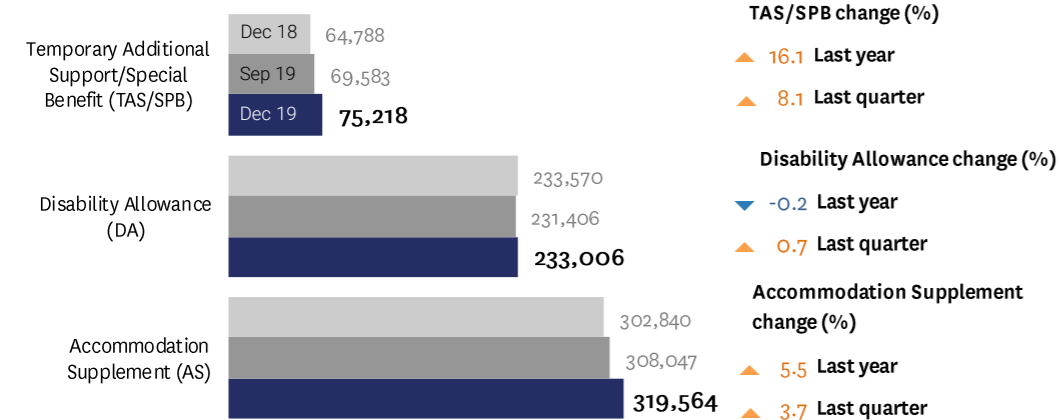
Main benefits over time



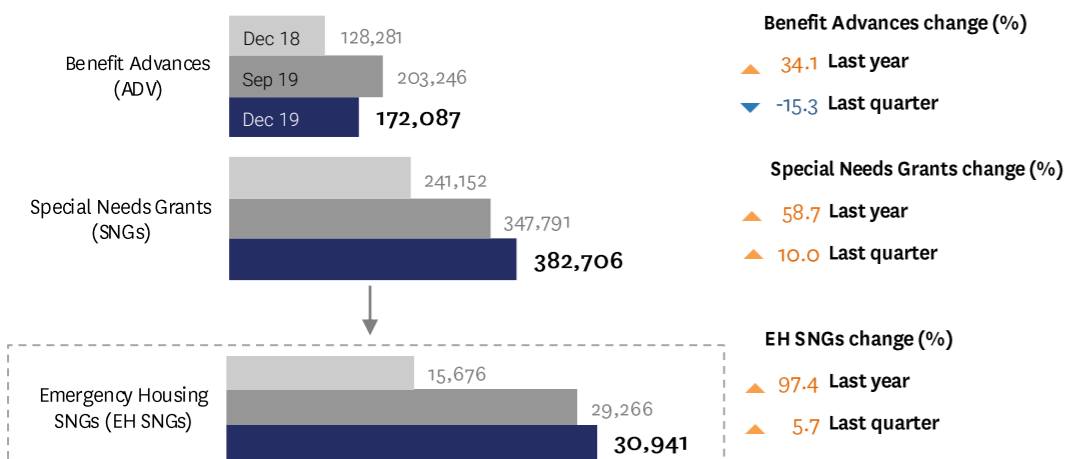
Supplementary benefits and Hardship assistance

① Supplementary and Hardship Assistance numbers include all recipients receiving the assistance shown, not only working-age clients. Benefit Advances and Special Needs Grants (SNGs) are the sum of grants over the three months of the quarter (i.e. October 2019 – December 2019). The sum of Special Needs Grants also includes Emergency Housing SNGs.

Supplementary benefits



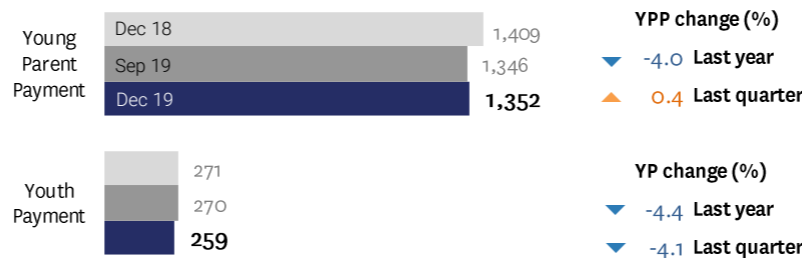
Hardship assistance



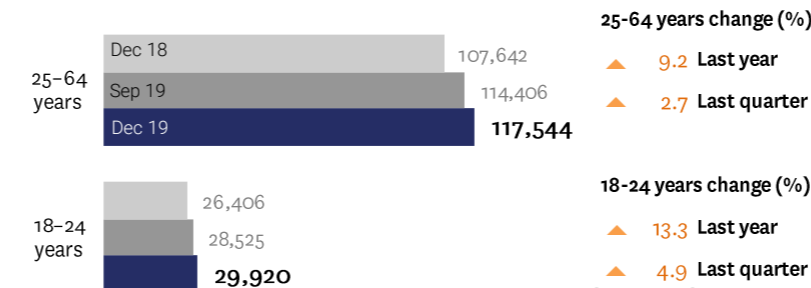
① The Special Needs Grants for Emergency Housing (EH SNGs) pay for emergency accommodation provided by emergency housing providers.

Youth

Youth Benefits (18 to 24 years)

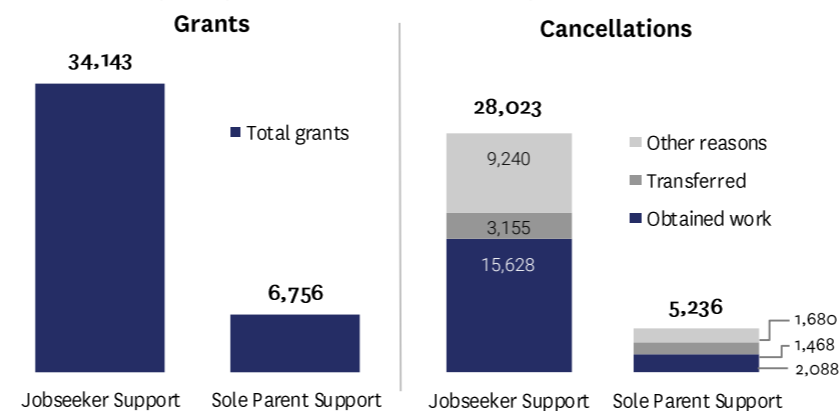


Jobseeker Support by age group



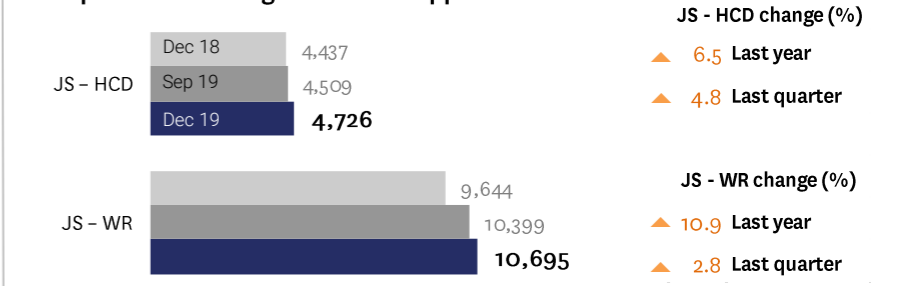
Grants and cancellations of benefits

① Benefit grants and cancellations are the sum of grants and cancellations over the three months of the quarter (i.e. October 2019 – December 2019).

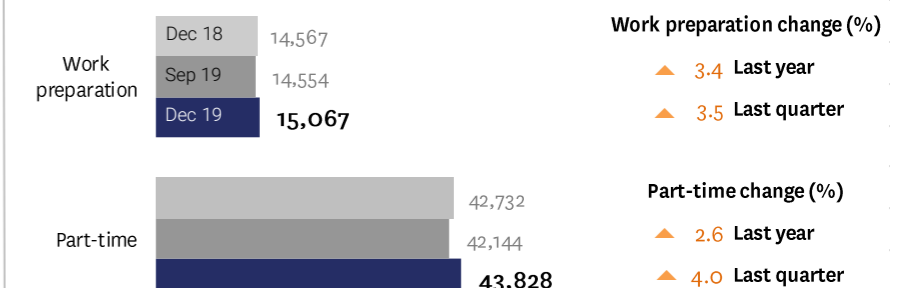


Sole parents

Sole parents receiving Jobseeker Support



Sole Parent Support by work obligation



Other main benefits

